

System: RapidaPlus, SVR, SVR Turn, Easy, Futura

Problem:

Machine is not die/profile cutting around tray/bowls and may not be clean cutting the trim

Possible Reasons:

- 1) Check that the silicone is still in good condition
- 2) Check that there are no loose bolts. It is possible that a bolt from one of the Teflon sealing plates has not backed out. This can happen and it is very difficult to see.

Brief Description:

As with all tray sealers there is an incredible amount of movement with these sealers. The sealing plates are spring loaded, as is the top plate. Of course if you find a loose screw/bolt it is imperative that the location be found before using the tray sealer. Failure to do so may result in serious damage.

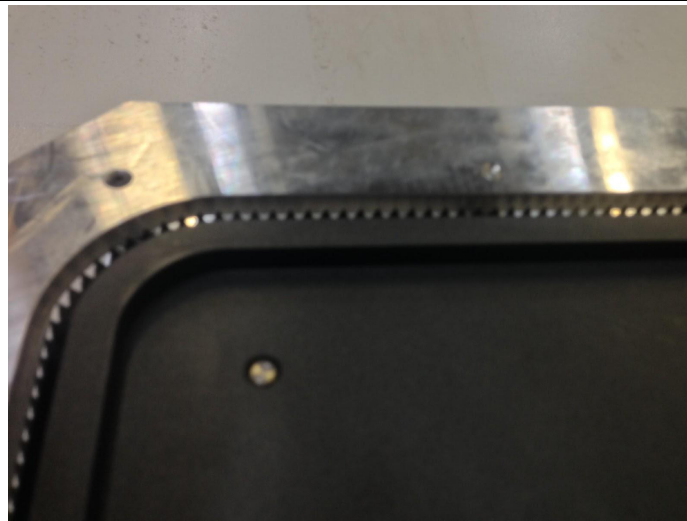
Whenever handling the tooling be **VERY CAREFUL** as there are sharp edges present. If a loose bolt is not visible and the silicone is in good condition, then here is a check to make:

The Teflon sealing plates are held on with bolts which incorporate a spring. From the bottom of the tooling you can only see the bottom of the bolts.

Notice the end here.



Make sure that you see all of the ends of the bolts.



If you are still experiencing difficulties with your machine, please feel free to contact us at (514) 631-6222, or toll free at 1-877-631-2462.